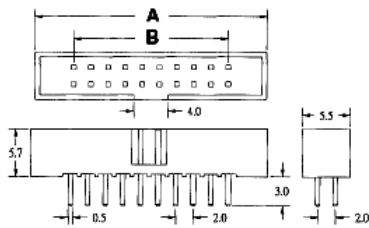


Connettori IDC e per SMART CARD

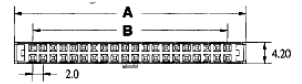
Connettori IDC maschi a basso profilo passo 2mm versione diritta



colore nero UL94V0

Art.	vie	A	B
APHB20010	10	17.10	8
APHB20014	14	21.10	12
APHB20016	16	23.10	14
APHB20020	20	27.10	18
APHB20026	26	33.10	24
APHB20030	30	37.10	28
APHB20034	34	41.10	32
APHB20040	40	47.10	38
APHB20044	44	51.10	42
APHB20050	50	57.10	48

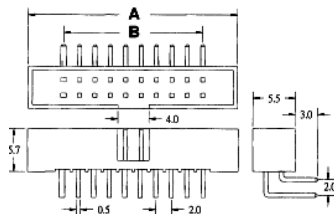
Connettori IDC femmine a basso profilo passo 2mm per cavo piatto



colore nero UL94V0

Art.	vie	A	B
ASFC20010RG	10	15.10	8
ASFC20014RG	14	19.10	12
ASFC20016RG	16	21.10	14
ASFC20020RG	20	25.10	18
ASFC20026RG	26	31.10	24
ASFC20030RG	30	35.10	28
ASFC20034RG	34	39.10	32
ASFC20040RG	40	45.10	38
ASFC20044RG	44	49.10	42
ASFC20050RG	50	55.10	48

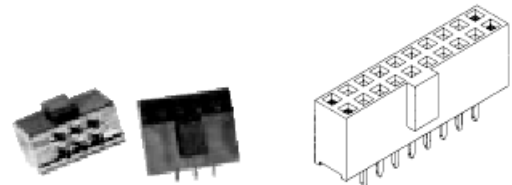
Connettori IDC maschi a basso profilo passo 2mm versione a 90°



colore nero UL94V0

Art.	vie	A	B
APHB20010RA	10	17.10	8
APHB20014RA	14	21.10	12
APHB20016RA	16	23.10	14
APHB20020RA	20	27.10	18
APHB20026RA	26	33.10	24
APHB20030RA	30	37.10	28
APHB20034RA	34	41.10	32
APHB20040RA	40	47.10	38
APHB20044RA	44	51.10	42
APHB20050RA	50	57.10	48

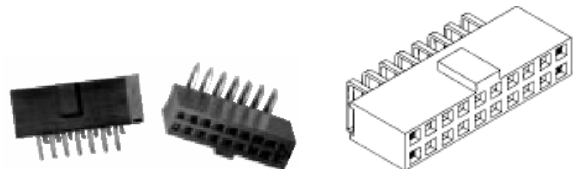
Connettori IDC femmina a basso profilo passo 2.54 da circuito stampato diritti



colore nero UL94V0

Art.	Vie
AFF1008SGB1	8
AFF1010SGB1	10
AFF1014SGB1	14
AFF1016SGB1	16
AFF1020SGB1	20
AFF1026SGB1	26

Connettori IDC femmina a basso profilo passo 2.54 da circuito stampato 90°

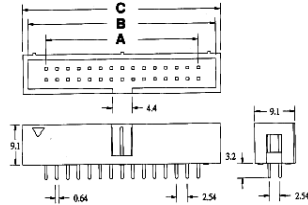
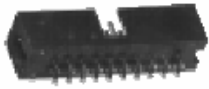


colore nero UL94V0

Art.	Vie
AFF1010RGB1	10
AFF1014RGB1	14
AFF1016RGB1	16
AFF1020RGB1	20

Connettori IDC e per SMART CARD

Connettori IDC maschi a basso profilo passo 2.54mm versione diritta - **STANDARD** -



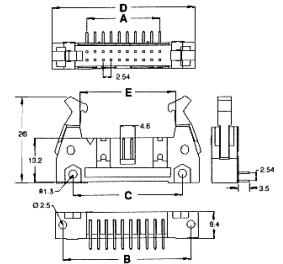
colore nero UL94V0

Art.	vie	A	B	C
A281/10D	10	10.16	18.10	20.30
A281/14D	14	15.24	23.18	25.38
A281/16D	16	17.78	25.72	27.92
A281/20D	20	22.86	30.80	33.00
A281/26D	26	30.48	38.42	40.62
A281/34D	34	40.64	48.58	50.78
A281/40D	40	48.26	56.20	58.40
A281/50D	50	60.96	68.90	71.10
A281/60D	60	73.66	81.60	83.80
A281/64D	64	78.74	86.88	88.88

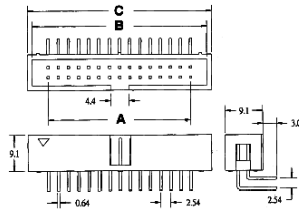
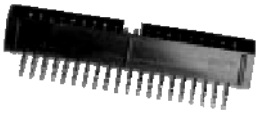
colore nero UL94V0

Art.	vie	A	B	C	D	E
A283/10	10	10.16	27.52	21.57	32.24	18.25
A283/14	14	15.24	32.60	26.65	37.32	23.33
A283/16	16	17.78	35.14	29.19	39.86	25.87
A283/20	20	22.86	40.22	34.27	44.94	30.95
A283/26	26	30.48	47.81	41.89	52.56	38.57
A283/34	34	40.64	58.00	52.05	62.72	48.73
A283/40	40	48.26	66.62	59.67	70.34	56.35
A283/50	50	60.96	78.32	72.37	83.04	69.05
A283/60	60	73.66	91.02	85.07	95.74	81.75
A283/64	64	78.74	96.10	90.15	100.82	86.83

Connettori IDC maschi con estrattori passo 2.54mm versione a 90° - **STANDARD** -



Connettori IDC maschi a basso profilo passo 2.54mm versione 90° - **STANDARD** -



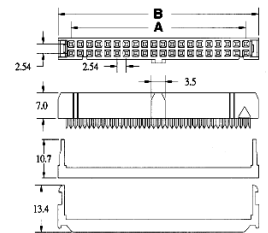
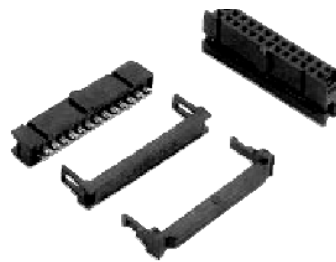
colore nero UL94V0

Art.	vie	A	B	C
A281/1090	10	10.16	18.10	20.30
A281/1490	14	15.24	23.18	25.38
A281/1690	16	17.78	25.72	27.92
A281/2090	20	22.86	30.80	33.00
A281/2690	26	30.48	38.42	40.62
A281/3490	34	40.64	48.58	50.78
A281/4090	40	48.26	56.20	58.40
A281/5090	50	60.96	68.90	71.10
A281/6090	60	73.66	81.60	83.80
A281/6490	64	78.74	86.88	88.88

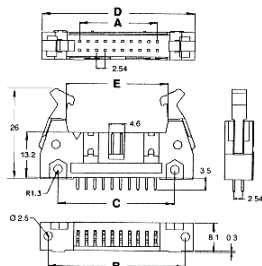
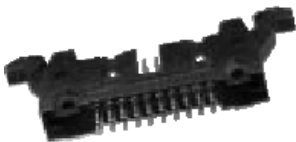
colore nero UL94V0

Art.	vie	A	B	C	D	E
A283/1090	10	10.16	27.52	21.57	32.24	18.25
A283/1490	14	15.24	32.60	26.65	37.32	23.33
A283/1690	16	17.78	35.14	29.19	39.86	25.87
A283/2090	20	22.86	40.22	34.27	44.94	30.95
A283/2690	26	30.48	47.81	41.89	52.56	38.57
A283/3490	34	40.64	58.00	52.05	62.72	48.73
A283/4090	40	48.26	66.62	59.67	70.34	56.35
A283/5090	50	60.96	78.32	72.37	83.04	69.05
A283/6090	60	73.66	91.02	85.07	95.74	81.75
A283/6490	64	78.74	96.10	90.15	100.82	86.83

Connettori IDC femmina passo 2.54mm da cavo piatto con serracavo - **STANDARD** -



Connettori IDC maschi con estrattori passo 2.54mm - **STANDARD** -

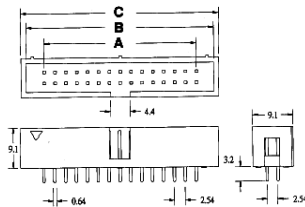
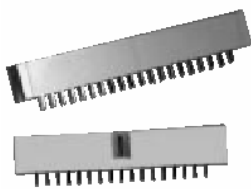


colore nero UL94V0

Art.	vie	A	B
A280/08	8	-	-
A280/10	10	10.16	17.26
A280/14	14	15.24	22.34
A280/16	16	17.78	24.88
A180/20	20	22.86	29.96
A280/26	26	30.48	37.58
A280/34	34	40.64	47.74
A280/40	40	48.26	55.36
A280/50	50	60.96	68.06
A280/60	60	73.66	80.76
A280/64	64	78.74	85.84

Connettori IDC e per SMART CARD

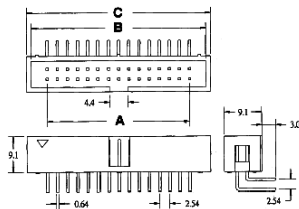
Connettori IDC maschi a basso profilo passo 2.54mm versione diritta



colore grigio UL94V0

Art.	vie	A	B	C
A281/10UL	10	10.16	18.10	20.30
A281/14DG	14	15.24	23.18	25.38
A281/16UL	16	17.78	25.72	27.92
A281/20UL	20	22.86	30.80	33.00
A281/26UL	26	30.48	38.42	40.62
A280/30UL	30	35.56	43.25	45.80
A281/34UL	34	40.64	48.58	50.78
A281/40UL	40	48.26	56.20	58.40
A281/50UL	50	60.96	68.90	71.10
A281/60UL	60	73.66	81.60	83.80

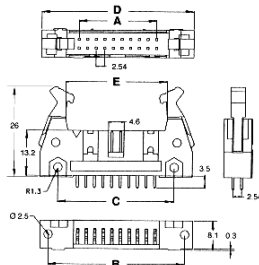
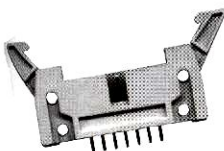
Connettori IDC maschi a basso profilo passo 2.54mm versione 90°



colore grigio UL94V0

Art.	vie	A	B	C
A281/1090UL	10	10.16	18.10	20.30
A281/1490UL	14	15.24	23.18	25.38
A281/1690UL	16	17.78	25.72	27.92
A281/2090UL	20	22.86	30.80	33.00
A281/2690UL	26	30.48	38.42	40.62
A281/3090UL	30	35.56	43.25	45.80
A281/3490UL	34	40.64	48.58	50.78
A281/4090UL	40	48.26	56.20	58.40
A281/5090UL	50	60.96	68.90	71.10
A281/6090G	60	73.66	81.60	83.80

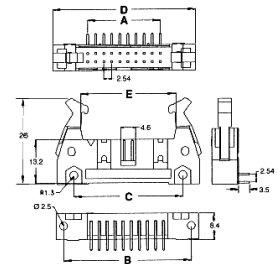
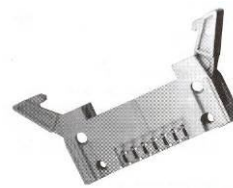
Connettori IDC maschi con estrattori passo 2.54mm versione diritta



colore grigio UL94V0

Art.	vie	A	B	C	D	E
A283/10UL	10	10.16	27.52	21.57	32.24	18.25
A283/14UL	14	15.24	32.60	26.65	37.32	23.33
A283/16UL	16	17.78	35.14	29.19	39.86	25.87
A283/20UL	20	22.86	40.22	34.27	44.94	30.95
A283/26DG	26	30.48	47.81	41.89	52.56	38.57
A283/30D	30	35.56	53.34	47.30	57.40	-
A283/34UL	34	40.64	58.00	52.05	62.72	48.73
A283/40UL	40	48.26	66.62	59.67	70.34	56.35
A283/50UL	50	60.96	78.32	72.37	83.04	69.05
A283/60UL	60	73.66	91.02	85.07	95.74	81.75
A283/64UL	64	78.74	96.10	90.15	100.82	86.83

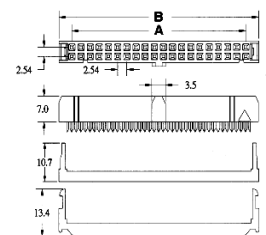
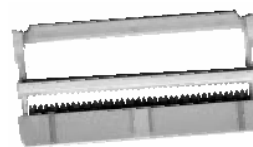
Connettori IDC maschi con estrattori passo 2.54mm versione a 90°



colore grigio UL94V0

Art.	vie	A	B	C	D	E
A283/1090UL	10	10.16	27.52	21.57	32.24	18.25
A283/1490UL	14	15.24	32.60	26.65	37.32	23.33
A283/1690UL	16	17.78	35.14	29.19	39.86	25.87
A283/2090G	20	22.86	40.22	34.27	44.94	30.95
A283/2690UL	26	30.48	47.81	41.89	52.56	38.57
A283/3090UL	30	35.56	53.34	47.30	57.40	-
A283/3490UL	34	40.64	58.00	52.05	62.72	48.73
A283/4090UL	40	48.26	66.62	59.67	70.34	56.35
A283/5090UL	50	60.96	78.32	72.37	83.04	69.05

Connettori IDC femmina passo 2.54mm da cavo piatto con serracavo



colore grigio UL94V0

Art.	vie	A	B
A280/10UL	10	10.16	17.26
A280/14UL	14	15.24	22.34
A280/16UL	16	17.78	24.88
A180/20UL	20	22.86	29.96
A280/26UL	26	30.48	37.58
A280/30UL	30	35.56	42.75
A280/34UL	34	40.64	47.74
A280/40UL	40	48.26	55.36
A280/50UL	50	60.96	68.06
A280/60UL	60	73.66	80.76
A280/64UL	64	78.74	85.84

Connettori IDC e per SMART CARD

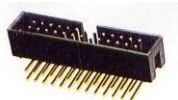
Connettori IDC maschi a basso profilo passo 2.54mm versione diritta



Art.	vie	colore	marca
A281/10DX	10	grigio	HARTING*
A281/40DX	40	azzurro	YAMAICHI
A2812773	40	nero	AMP
A281/40DMA	40	nero	MOLEX
A281/50DMA	50	nero	MOLEX
A2812783	50	nero	AMP
A281/60DA	60	nero	AMP

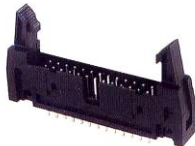
* polarizzazione laterale

Connettori IDC maschi a basso profilo passo 2.54mm versione 90°



Art.	vie	colore	marca
A281/2690X	26	azzurro	YAMAICHI
A2812842	34	nero	AMP
A281/3490X	34	azzurro	YAMAICHI
A2812852	40	nero	AMP
A281/4090H	40	grigio	HARTING
A281/4090X	40	azzurro	YAMAICHI

Connettori IDC maschi con estrattori passo 2.54mm versione diritta



Art.	vie	colore	marca
A283/10DX	10	azzurro	YAMAICHI
A12815204	14	nero	AMP
A283/16DX	16	grigio	HARTING
A283/26DA	26	nero	AMP
A283/26DX	26	nero	MOLEX
A283/40DX	40	grigio	HARTING
A283/50DX	50	grigio	HARTING

Connettori IDC maschi passo 2.54mm versione diritta

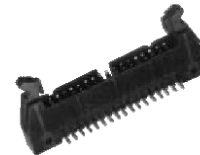


Art.	vie	colore	marca
121656	6	grigio	HARTING*

* estrattori art. 121654

Art.	vie	colore	marca
121656	6	grigio	HARTING*
A282/10DX	10	azzurro	YAMAICHI
A282/14D	14	nero	AMP
A282/16DX	16	azzurro	YAMAICHI
A282/34DX	34	azzurro	YAMAICHI
A282/40X	40	azzurro	YAMAICHI
A282/44D	44	nero	AMP
A282/50X	50	azzurro	YAMAICHI

Connettori IDC maschi con estrattori passo 2.54mm versione a 90°



Art.	vie	colore	marca
A283/1090X	10	azzurro	YAMAICHI
A12815244	14	nero	AMP
A283/1690X	16	grigio	HARTING
A283/3490X	34	grigio	HARTING

Connettori IDC maschi passo 2.54mm versione a 90° senza estrattori



Art.	vie	colore	marca
A282/1090X	10	azzurro	YAMAICHI
A280/1090A	10	nero	AMP
A282/1690X	16	azzurro	YAMAICHI
A282/1690A	16	nero	AMP
A282/3490X	34	azzurro	YAMAICHI
A282/3490A	34	nero	AMP
A282/4090X	40	azzurro	YAMAICHI
A282/4490A	44	nero	AMP
A282/5090X	50	azzurro	YAMAICHI
A282/5090A	50	nero	AMP
A282/6090A	60	nero	AMP

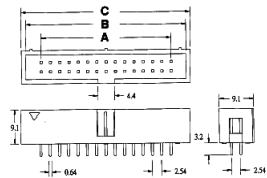
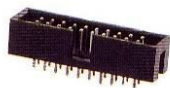
Connettori IDC femmina passo 2.54mm da cavo piatto senza serracavo



Art.	vie	colore	marca
A280/10XX	10	grigio	HARTING
A280/16A	16	nero	AMP
A280/16X	16	grigio	HARTING
A280/16M	16	nero	MOLEX
A280/20A	20	nero	AMP
A280/26XX	26	grigio	HARTING
A280/34X	34	grigio	HARTING
A280/34XX	34	azzurro	YAMAICHI
A280/34AX	34	nero	AMP
A280/40AX	40	nero	AMP
A283/44SX	44	nero	AMP

Connettori IDC e per SMART CARD

Connettori IDC maschi a basso profilo passo 2.54mm versione diritta T&B



colore nero

Art.	vie	A	B	C
A636/1027	10	10.16	18.10	20.30
A636/1427	14	15.24	23.18	25.38
A636/1627	16	17.78	25.72	27.92
A636/2027	20	22.86	30.80	33.00
A636/2627	26	30.48	38.42	40.62
A636/3427	34	40.64	48.58	50.78
A636/4027	40	48.26	56.20	58.40
A636/5027	50	60.96	68.90	71.10
A636/6027	60	73.66	81.60	83.80

* minimo ordine 50 pezzi escluso stock

A636/2024ES	20	22.86	40.22	34.27	44.94	30.95
A636/2624ES	26	30.48	47.81	41.89	52.56	38.57
A636/3424ES	34	40.64	58.00	52.05	62.72	48.73
A636/4024ES	40	48.26	66.62	59.67	70.34	56.35
A636/5024ES	50	60.96	78.32	72.37	83.04	69.05
A636/6024ES	60	73.66	91.02	85.07	95.74	81.75

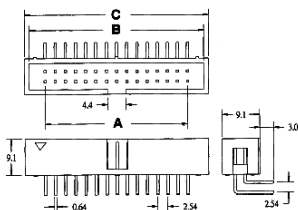
* minimo ordine 50 pezzi escluso stock

colore nero versione a 90°

Art.	vie	A	B	C	D	E
A636/1004ES	10	10.16	27.52	21.57	32.24	18.25
A636/1404ES	14	15.24	32.60	26.65	37.32	23.33
A636/1604ES	16	17.78	35.14	29.19	39.86	25.87
A636/2004ES	20	22.86	40.22	34.27	44.94	30.95
A636/2604ES	26	30.48	47.81	41.89	52.56	38.57
A636/3404ES	34	40.64	58.00	52.05	62.72	48.73
A636/4004ES	40	48.26	66.62	59.67	70.34	56.35
A636/5004ES	50	60.96	78.32	72.37	83.04	69.05
A636/6004ES	60	73.66	91.02	85.07	95.74	81.75

* minimo ordine 50 pezzi escluso stock

Connettori IDC maschi a basso profilo passo 2.54mm versione 90° T&B

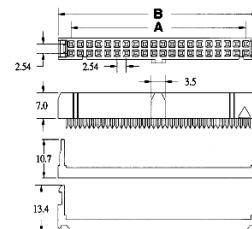
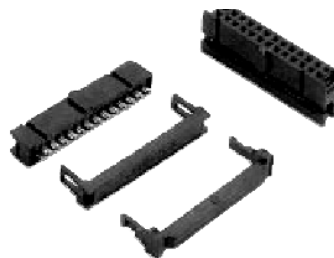


colore nero

Art.	vie	A	B	C
A636/1007	10	10.16	18.10	20.30
A636/1407	14	15.24	23.18	25.38
A636/1607	16	17.78	25.72	27.92
A636/2007	20	22.86	30.80	33.00
A636/2607	26	30.48	38.42	40.62
A636/3407	34	40.64	48.58	50.78
A636/4007	40	48.26	56.20	58.40
A636/5007	50	60.96	68.90	71.10
A636/6007	60	73.66	81.60	83.80

* minimo ordine 50 pezzi escluso stock

Connettori IDC femmina passo 2.54mm da cavo piatto con serracavo T&B

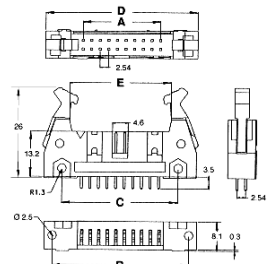
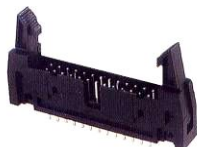


colore nero

Art.	vie	A	B
A636/1041	10	10.16	17.26
A636/1441	14	15.24	22.34
A636/1641	16	17.78	24.88
A636/2041	20	22.86	29.96
A636/2641	26	30.48	37.58
A636/3441	34	40.64	47.74
A636/4041	40	48.26	55.36
A636/5041	50	60.96	68.06
A636/6041	60	73.66	80.76

* minimo ordine 50 pezzi escluso stock

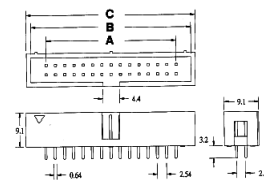
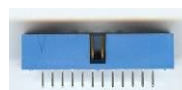
Connettori IDC maschi con estrattori passo 2.54mm T&B



colore nero versione diritta

Art.	vie	A	B	C	D	E
A636/1024ES	10	10.16	27.52	21.57	32.24	18.25
A636/1424ES	14	15.24	32.60	26.65	37.32	23.33
A636/1624ES	16	17.78	35.14	29.19	39.86	25.87

Connettori IDC maschi a basso profilo passo 2.54mm T&B



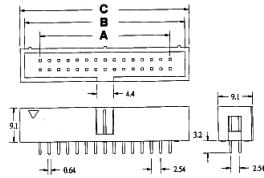
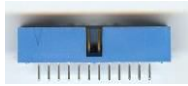
colore azzurro terminali diritti lunghi 2.59mm

Art.	vie	A	B	C
A609/1027	10	10.16	18.10	20.30
A609/1427	14	15.24	23.18	25.38
A609/1627	16	17.78	25.72	27.92
A609/2027	20	22.86	30.80	33.00
A609/2627	26	30.48	38.42	40.62
A609/3427	34	40.64	48.58	50.78
A609/4027	40	48.26	56.20	58.40
A609/5027	50	60.96	68.90	71.10
A609/6027	60	73.66	81.60	83.80

* minimo ordine 50 pezzi escluso stock

Connettori IDC e per SMART CARD

Connettori IDC maschi a basso profilo passo 2.54mm T&B



colore azzurro terminali dritti lunghi 4.19mm

Art.	vie	A	B	C
A609/1037	10	10.16	18.10	20.30
A609/1437	14	15.24	23.18	25.38
A609/1637	16	17.78	25.72	27.92
A609/2037	20	22.86	30.80	33.00
A609/2637	26	30.48	38.42	40.62
A609/3437	34	40.64	48.58	50.78
A609/4037	40	48.26	56.20	58.40
A609/5037	50	60.96	68.90	71.10
A609/6037	60	73.66	81.60	83.80

* minimo ordine 50 pezzi escluso stock

colore azzurro terminali a 90° lunghi 2.59mm

Art.	vie	A	B	C
A609/1007	10	10.16	18.10	20.30
A609/1407	14	15.24	23.18	25.38
A609/1607	16	17.78	25.72	27.92
A609/2007	20	22.86	30.80	33.00
A609/2607	26	30.48	38.42	40.62
A609/3407	34	40.64	48.58	50.78
A609/4007	40	48.26	56.20	58.40
A609/5007	50	60.96	68.90	71.10
A609/6007	60	73.66	81.60	83.80

* minimo ordine 50 pezzi escluso stock

colore azzurro terminali a 90° lunghi 4.19mm

Art.	vie	A	B	C
A609/1017	10	10.16	18.10	20.30
A609/1417	14	15.24	23.18	25.38
A609/1617	16	17.78	25.72	27.92
A609/2017	20	22.86	30.80	33.00
A609/2617	26	30.48	38.42	40.62
A609/3417	34	40.64	48.58	50.78
A609/4017	40	48.26	56.20	58.40
A609/5017	50	60.96	68.90	71.10
A609/6017	60	73.66	81.60	83.80

* minimo ordine 50 pezzi escluso stock

colore azzurro terminali a 90° lunghi 15.49mm wire wrap

Art.	vie	A	B	C
A609/1047	10	10.16	18.10	20.30
A609/1447	14	15.24	23.18	25.38
A609/1647	16	17.78	25.72	27.92
A609/2047	20	22.86	30.80	33.00
A609/2647	26	30.48	38.42	40.62
A609/3447	34	40.64	48.58	50.78
A609/4047	40	48.26	56.20	58.40
A609/5047	50	60.96	68.90	71.10
A609/6047	60	73.66	81.60	83.80

* minimo ordine 50 pezzi escluso stock

Connettori IDC maschi a basso profilo passo 2.54mm versione diritta T&B



colore azzurro

Art.	vie
A609/1428	14
A609/2628	26

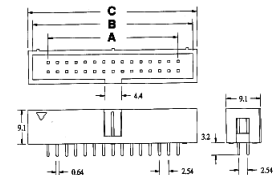
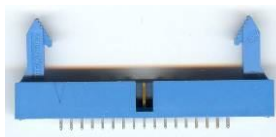
Connettori IDC maschi a basso profilo passo 2.54mm versione a 90° con fissaggio T&B



colore azzurro

Art.	vie
A609/1018	10
A609/1048	10*
A609/1618	16
A609/2018	20
A609/2618	26
A609/5618	56

Connettori IDC maschi a basso profilo passo 2.54mm con estrattori T&B



colore azzurro terminali dritti lunghi 2.59mm

Art.	vie	A	B	C
A609/1027ES	10	10.16	18.10	20.30
A609/1427ES	14	15.24	23.18	25.38
A609/1627ES	16	17.78	25.72	27.92
A609/2027ES	20	22.86	30.80	33.00
A609/2627ES	26	30.48	38.42	40.62
A609/3427ES	34	40.64	48.58	50.78
A609/4027ES	40	48.26	56.20	58.40
A609/5027ES	50	60.96	68.90	71.10
A609/6027ES	60	73.66	81.60	83.80

* minimo ordine 50 pezzi escluso stock

colore azzurro terminali dritti lunghi 15.49mm wire wrap

Art.	vie	A	B	C
A609/5057ES	50	60.96	68.90	71.10
A609/6027ES	60	73.66	81.60	83.80

* minimo ordine 50 pezzi escluso stock

colore azzurro terminali a 90° lunghi 2.59mm

Art.	vie	A	B	C
A609/1007ES	10	10.16	18.10	20.30
A609/1407ES	14	15.24	23.18	25.38
A609/1607ES	16	17.78	25.72	27.92
A609/2007ES	20	22.86	30.80	33.00
A609/2607ES	26	30.48	38.42	40.62
A609/3407ES	34	40.64	48.58	50.78
A609/4007ES	40	48.26	56.20	58.40

Connettori IDC e per SMART CARD

colore azzurro terminali a 90° lunghi 2.59mm

Art.	vie	A	B	C
A609/5007ES	50	60.96	68.90	71.10
A609/6007ES	60	73.66	81.60	83.80

* minimo ordine 50 pezzi escluso stock

colore azzurro terminali a 90° lunghi 4.19mm

Art.	vie	A	B	C
A609/1017ES	10	10.16	18.10	20.30
A609/1417ES	14	15.24	23.18	25.38
A609/1617ES	16	17.78	25.72	27.92
A609/2017ES	20	22.86	30.80	33.00
A609/2617ES	26	30.48	38.42	40.62
A609/3417ES	34	40.64	48.58	50.78
A609/4017ES	40	48.26	56.20	58.40
A609/5017ES	50	60.96	68.90	71.10
A609/6017ES	60	73.66	81.60	83.80

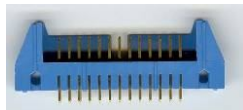
* minimo ordine 50 pezzi escluso stock

colore azzurro terminali a 90° lunghi 15.49mm wire wrap

Art.	vie	A	B	C
A609/1047ES	10	10.16	18.10	20.30
A609/1447ES	14	15.24	23.18	25.38
A609/1647ES	16	17.78	25.72	27.92
A609/2047ES	20	22.86	30.80	33.00
A609/2647ES	26	30.48	38.42	40.62
A609/3447ES	34	40.64	48.58	50.78
A609/4047ES	40	48.26	56.20	58.40
A609/5047ES	50	60.96	68.90	71.10
A609/6047ES	60	73.66	81.60	83.80

* minimo ordine 50 pezzi escluso stock

Connettori IDC maschi passo 2.54mm Senza estrattori T&B



colore azzurro terminali dritti

Art.	vie
A609/1622M	16
A609/2022M	20
A609/2039M	20
A609/2639M	26
A609/2622M	26
A609/3422M	34
A609/4022M	40

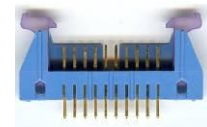
colore azzurro terminali a 90°

Art.	vie
A609/1002M	10
A609/1012M	10
A609/1042M	10
A609/2009M	20
A609/2612M	26
A609/2602M	26
A609/3412M	34
A609/4002M	40
A609/6012M	60

colore azzurro terminali a 90° lunghi 15.49mm wire wrap

Art.	vie
A609/4042M	40
A609/5042M	50

Connettori IDC maschi passo 2.54mm con estrattori T&B



colore azzurro terminali dritti

Art.	vie
A609/2032MR	20
A609/3432MR	34
A609/5032MR	50
A609/6032MR	60

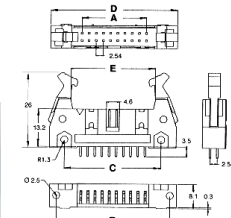
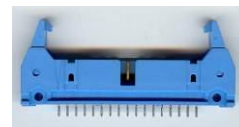
colore azzurro terminali a 90°

Art.	vie
A609/2009MR	20
A609/2002MR	20
A609/2602MR	26
A609/3402MR	34
A609/4012MR	40

colore azzurro terminali a 90° lunghi 15.49mm wire wrap

Art.	vie
A609/1042MR	10
A609/2042MR	20
A609/2642MR	26
A609/4042MR	40

Connettori IDC maschi con estrattori passo 2.54mm T&B



colore azzurro terminali dritti lunghi 2.9mm

Art.	vie	A	B	C	D	E
A622/1024ES	10	10.16	27.52	21.57	32.24	18.25
A622/1424ES	14	15.24	32.60	26.65	37.32	23.33
A622/1624ES	16	17.78	35.14	29.19	39.86	25.87
A622/2024ES	20	22.86	40.22	34.27	44.94	30.95
A622/2624ES	26	30.48	47.81	41.89	52.56	38.57
A622/3424ES	34	40.64	58.00	52.05	62.72	48.73
A622/4024ES	40	48.26	66.62	59.67	70.34	56.35
A622/5024ES	50	60.96	78.32	72.37	83.04	69.05
A622/6024ES	60	73.66	91.02	85.07	95.74	81.75

* minimo ordine 50 pezzi escluso stock

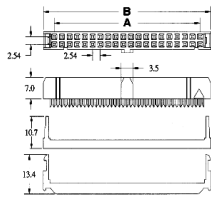
colore azzurro terminali a 90° lunghi 2.9mm

Art.	vie	A	B	C	D	E
A622/1004ES	10	10.16	27.52	21.57	32.24	18.25
A622/1404ES	14	15.24	32.60	26.65	37.32	23.33
A622/1604ES	16	17.78	35.14	29.19	39.86	25.87
A622/2004ES	20	22.86	40.22	34.27	44.94	30.95
A622/2604ES	26	30.48	47.81	41.89	52.56	38.57
A622/3404ES	34	40.64	58.00	52.05	62.72	48.73
A622/4004ES	40	48.26	66.62	59.67	70.34	56.35
A622/5004ES	50	60.96	78.32	72.37	83.04	69.05
A622/6004ES	60	73.66	91.02	85.07	95.74	81.75

* minimo ordine 50 pezzi escluso stock

Connettori IDC e per SMART CARD

Connettori IDC femmina passo 2.54mm da cavo piatto T&B



colore azzurro con serracavo

Art.	vie	A	B
A609/1041	10	10.16	17.26
A609/1441	14	15.24	22.34
A609/1641	16	17.78	24.88
A609/2041	20	22.86	29.96
A609/2641	26	30.48	37.58
A609/3441	34	40.64	47.74
A609/4041	40	48.26	55.36
A609/5041	50	60.96	68.06
A609/6041	60	73.66	80.76

* minimo ordine 50 pezzi escluso stock

colore azzurro senza serracavo

Art.	vie	A	B
A609/1030	10	10.16	17.26
A609/1430	14	15.24	22.34
A609/1630	16	17.78	24.88
A609/2030	20	22.86	29.96
A609/2630	26	30.48	37.58
A609/3430	34	40.64	47.74
A609/4030	40	48.26	55.36
A609/5030	50	60.96	68.06
A609/6030	60	73.66	80.76

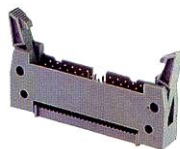
* minimo ordine 50 pezzi escluso stock

serracavo colore azzurro

Art.	vie
A609/1031	10
A609/1431	14
A609/1631	16
A609/2031	20
A609/2631	26
A609/3431	34
A609/4031	40
A609/5031	50
A609/6031	60

* minimo ordine 100pezzi escluso stock

Connettori IDC maschio da cavo piatto per prolunghe



con estrattori colore grigio

Art.	vie
A286/10	10
G-58152	14
G-58153	16
A286/20	20
A286/26	26
A286/34	34

con estrattori colore grigio

Art.	vie
A286/40	40
G-58158	50
G-58159	60
G-58160	64

* minimo ordine 5 pezzi escluso stock

senza estrattori colore azzurro T&B

Art.	vie
A622/3406	34
A622/5006	50

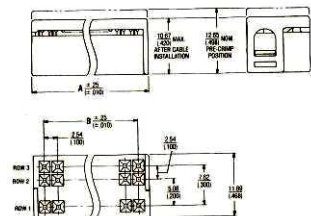
* minimo ordine 50 pezzi escluso stock

Connettori da cavo piatto per circuito stampato 4 file



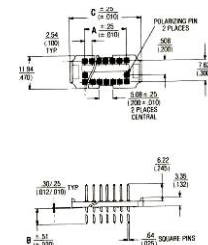
Art.	vie	colore	marca
A609/1603	16	azzurro	T&B
ARTG08B26LA	26	grigio	3M
ARTG08B50LA	50	nero	ITT CANNON
A609/5003	50	azzurro	T&B

Connettore femmina colore azzurro T&B



Art.	vie	A	B
A609/F141M	14	19.51	15.24

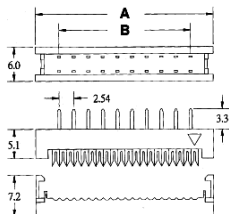
Connettore maschio colore azzurro T&B



Art.	vie	A	B	C
A609/1478	14	15.24	3.05	26.06

Connettori IDC e per SMART CARD

Connettori transition da cavo piatto STANDARD

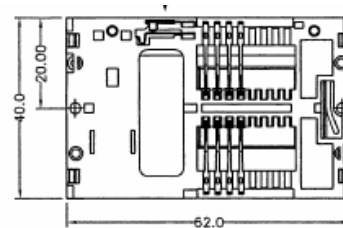
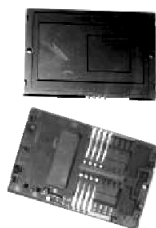


colore nero

Art.	vie	A	B
A11664280X	10	18.04	10.16
A11664284X	14	23.18	15.24
A11664286X	16	25.73	17.78
A21664280X	20	30.70	22.86
A21664284X	24	35.68	27.94
A21664286X	26	38.43	30.48
A31664284X	34	48.45	40.64
A41664280X	40	56.04	48.26
A-ATFC25450	50	69.08	60.96

Art.	vie	colore	marca
A21664286M	26	nero	MOLEX
A31664284	34	nero	AMP
A41664280	40	nero	AMP
A41664284	44	nero	AMP
A51664280X	50	azzurro	YAMAICHI
A61664280X	60	azzurro	T&B

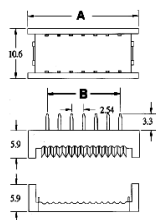
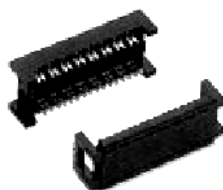
Connettori per SMART CARD



Contatti normalmente chiusi
ASMART8/02C

Contatti normalmente aperti
ASMART8/02P

Connettori dual in line tipo zoccolo da cavo piatto STANDARD



colore nero

Art.	vie	A	B
A1664318	8	15.44	10.16
A11664310X	10	17.98	15.24
A11664314X	14	23.06	17.78
A11664316X	16	25.60	22.86
A21664310X	20	30.68	30.48

Art.	vie	colore	marca
A11664314	14	azzurro	T&B
A11664318	18	nero	AMP
A41664318X	48	azzurro	T&B